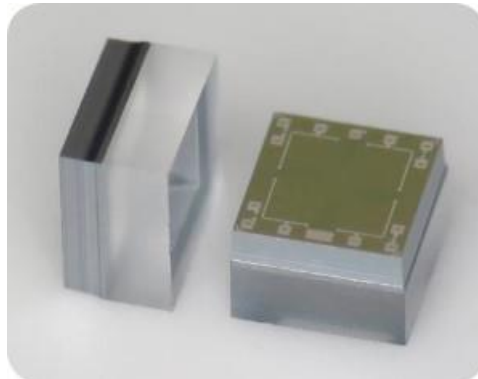


Process Platform: Pressure Sensor

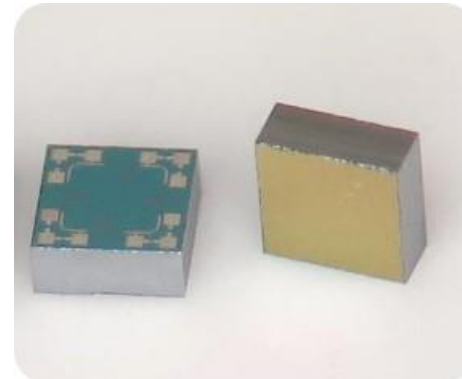
- Generic platform with customized options
- Leverage the mature process modules to shorten the time to market
- Wide pressure range to fulfill variety of aspects of requirements
- Uniform performance and output across a whole wafer
- Samples available for quick evaluation



KOH etched cavity



Typical PS with glass pedestal



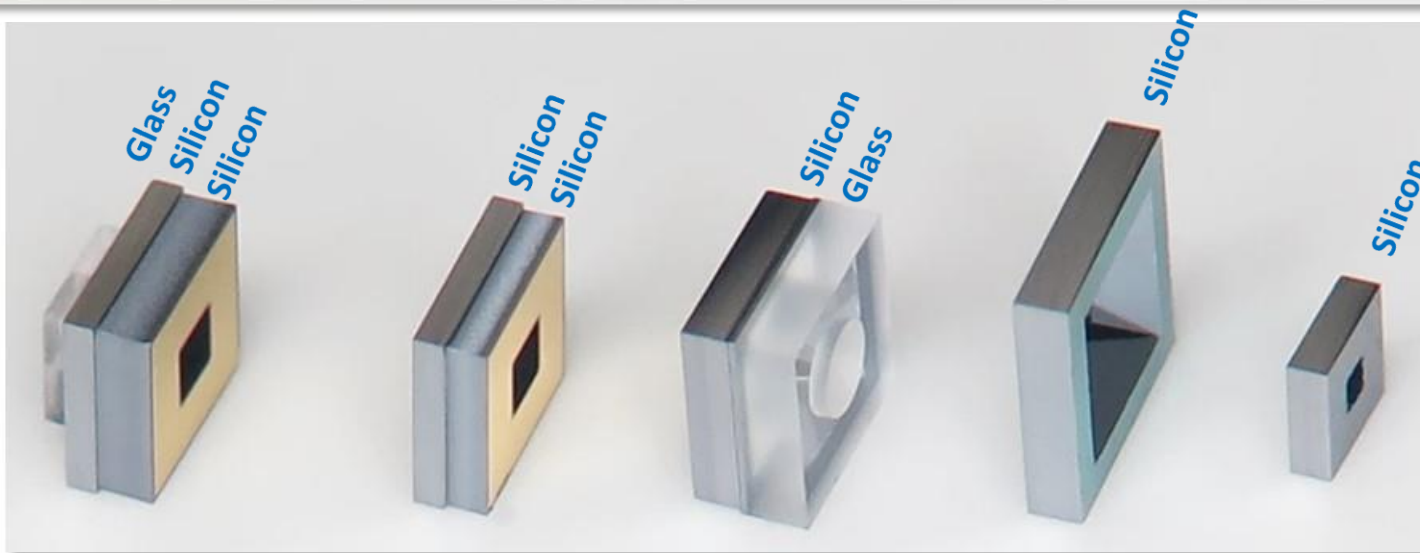
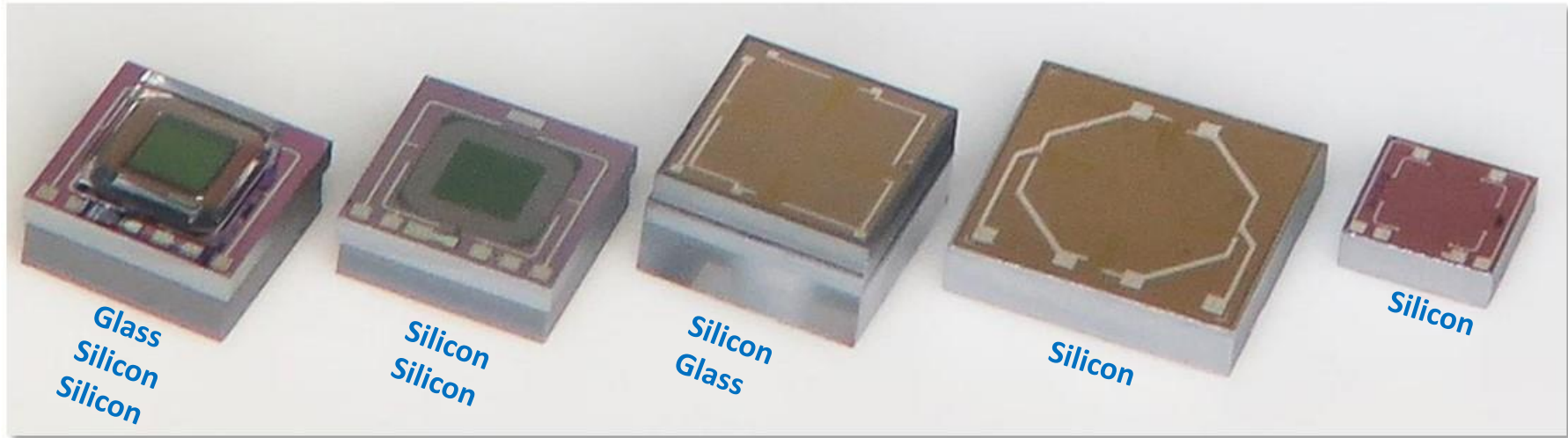
Smaller absolute PS with embedded cavity



Back-entry Absolute PS

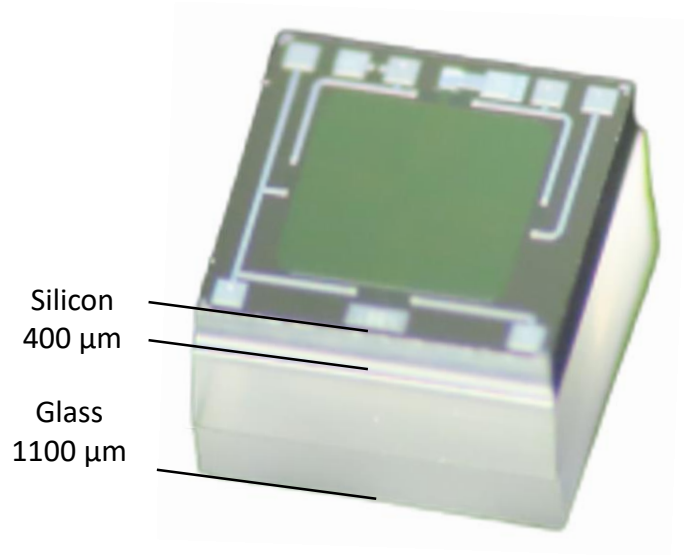
Process Platform: Pressure Sensor

- Variety of Pressure Sensor Types



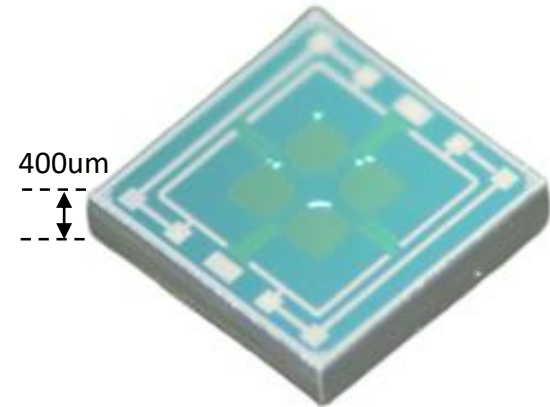
Process Platform: Pressure Sensor

Ultra-High Pressure Sensor (UHPS)



- Absolute type pressure sensor : 1000 / 3000 / 5000 / 7500 psi available
- Open Wheatstone bridge
- Top shielding layer (POLY) for isolation of environmental disturbances
- Thick glass pedestal for electrical isolation

Low pressure sensor with Top Recess (ALP-C)



- Differential type pressure for low pressure measurement; 0.5psi / 1psi samples available
- Competitive footprint with high sensitivity and linearity

Process Platform: Pressure Sensor

Catalog	Description	Part	Pressure Range		Type			Size (mm)		
			psi	kPa	Absolute	Gauge	Back-entry Absolute	L	W	H
Gen1.5	Silicon w/t KOH cavity Option for Glass bonding	ALP050-G	1.0	7		●		2.0	2.0	0.4
		ALP015-G	15	100		●		2.0	2.0	0.4
		AMP030-G	30	200	●	●		1.5	1.5	1.0
		AMP050-G	50	350	●	●		1.5	1.5	1.0
		ALP025-C	0.5	3.5		●		2.0	2.0	0.4
		ALP050-C	1.0	7		●		2.0	2.0	0.4
Gen2.0	Silicon w/t KOH cavity Option for Glass bonding	ALP040-G	5.8	40		●		1.65	1.65	0.4
		ALP100-G	15	100		●		1.65	1.65	0.4
GenX	Pure Silicon (Small Chip)	AXP015-A	15	100	●			1.0	1.0	0.4
		AXP100-A	100	700	●			1.0	1.0	0.4
HPS	Silicon w/t KOH cavity Bonded with thick pedestal glass	AHP150-G	150	1000		●		2.0	2.0	1.2
		AHP300-G	300	2000		●		2.0	2.0	1.2
UHPS	For ultra-high pressure	AHP1K0-A	1000	7000	●			2.0	2.0	1.5
		AHP3K0-A	3000	20000	●			2.0	2.0	1.5
		AHP5K0-A	5000	35000	●			2.0	2.0	1.5
		AHP7K5-A	7500	50000	●			2.0	2.0	1.5
BSA	Glass cap on Silicon (Stacked Chip)	BSA800-M	800	5500			●	2.0	2.0	1.3